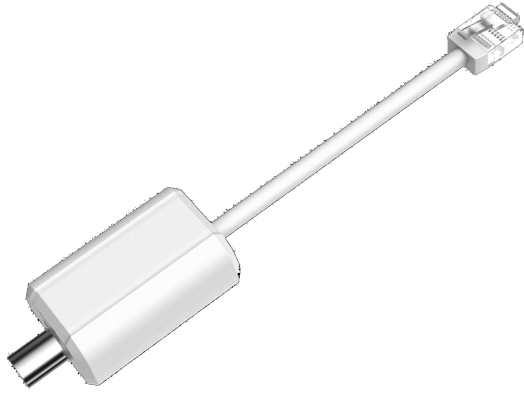


# IVB-EOC-102

1-Channel EoC Passive Converter



- Supports long range power supply transmission via coaxial cable
- Port: 1\*RJ45 10/100Mbps, 1\*BNC
- Supports RG59 coaxial cable: 400m/100Mbps, 1000m/10Mbps
- Supports MDI/MDIX self-adaption
- Supports IEEE802.3, IEEE802.3u standards

The IVB-EOC-102 is a RJ45 to BNC port converter which supports long range power supply transmission via coaxial cable. It provides one BNC coaxial port and one RJ45 port. The unit is equipped with 100Mbps and 10Mbps transmission modes.

## Technical Specification

### System

Model	IVB-EOC-102
Connections	1* 10/100 Mbps Base-TX 1* BNC
Power Consumption	<1W
Transmission Bandwidth	RG59 coaxial cable: 400m/100Mbps, 1000m/10Mbps
PoE Protocol	Based on the power input from the ePoE switch
Network Standard	IEEE802.3, IEEE802.3u
Lightning Protection	Common Mode 6KV Differential Mode 2KV
Operating Temperature	-40°C-60°C
Operating Humidity	0%-95%
Weight	28.3g (0.06 lbs)
Dimension (WxDxH)	56mm×27mm×21mm

## Application

### Transmission Performance

ePoE switch power supply voltage is 48V.  
The cable is RG59 coaxial cable, 100m DC impedance is no more than 5Ω

Cable (m)	Bandwidth (Mbps)	PoE Max Load Capacity (W)	Hi-PoE Max Load Capacity (W)	Network Operating Mode
100	100	25.5	50	IEEE/E100
200	100	25.5	30	E100
300	100	18	18	E100
400	100	15	15	E10
500	10	12	12	E10
800	10	6	6	E10
1000	10	5	5	E10

ePoE switch power supply voltage is 53V.  
The cable is RG59 coaxial cable, 100m DC impedance is no more than 5Ω

Cable (m)	Bandwidth (Mbps)	PoE Load Capacity (W)	Hi-PoE Load Capacity (W)	Working Mode
100	100	25.5	52	IEEE/E100
200	100	25.5	48	E100
300	100	25.5	30	E100
400	100	20	23	E100
500	10	16	16	E10
800	10	10	10	E10
1000	10	8	8	E10

